

Carey Rd between Ridgebank Cres and Roy Rd

October 21, 2019 To October 25, 2019



The data presented here is for information purposes only and should not be considered authoritative for construction, geotechnical, engineering, navigational, legal, or other site-specific uses. The information shared is owned by the Transportation Division of the Engineering Department at the District of Saanich. Accuracy is not guaranteed.

Start Date: 21-Oct-19
 Start Time: 0:06
 Station ID: C0011-07

Location 1: Carey Rd between Ridgebank Cres and Roy Rd

Note:

DATE:	October 21, 2019		October 22, 2019		October 23, 2019		October 24, 2019		October 25, 2019		WK AVG		WK AVG	HOURLY
	MON		TUE		WED		THURS		FRI		NB	SB	CH 1+2	%
Time:	NB	SB	NB	SB	NB	SB	NB	SB	NB	SB	NB	SB		
12-1 AM			8	4	11	5	7	7			9	5	14	0.4%
1-2 AM			4	2	3	4	3	1			3	2	6	0.1%
2-3 AM			3	1	6	0	6	1			5	1	6	0.1%
3-4 AM			5	1	4	1	7	1			5	1	6	0.2%
4-5 AM			8	3	6	1	3	2			6	2	8	0.2%
5-6 AM			12	11	13	13	12	11			12	12	24	0.6%
6-7 AM			66	40	62	34	63	40			64	38	102	2.6%
7-8 AM			131	92	159	95	153	114			148	100	248	6.4%
8-9 AM			302	192	259	195	257	203			273	197	469	12.2%
9-10 AM			115	83	81	80	90	85			95	83	178	4.6%
10-11 AM			83	76	78	66	71	73			77	72	149	3.9%
11-12 PM			70	91	84	76	68	77			74	81	155	4.0%
12-1 PM			85	100	94	81	98	83			92	88	180	4.7%
1-2 PM			89	107	79	96	88	86			85	96	182	4.7%
2-3 PM			130	142	131	162	159	211			140	172	312	8.1%
3-4 PM			173	244	158	176	183	235			171	218	390	10.1%
4-5 PM			165	240	186	215	179	259			177	238	415	10.7%
5-6 PM			183	178	136	169	178	178			166	175	341	8.8%
6-7 PM			133	111	104	90	136	105			124	102	226	5.9%
7-8 PM			88	78	83	73	92	77			88	76	164	4.2%
8-9 PM			69	52	66	50	71	70			69	57	126	3.3%
9-10 PM			53	23	63	31	51	35			56	30	85	2.2%
10-11 PM			20	29	25	24	29	20			25	24	49	1.3%
11-12 AM			10	6	12	14	16	14			13	11	24	0.6%
LANES			2005	1906	1903	1751	2020	1988			1976	1882	3858	100.0%
TOTAL			3911		3654		4008				3860			
	MON		TUE		WED		THURS		FRI	WK AVG				

PEAK HOUR					TOTAL VEHICALS-PEAK PERIODS		2 HOUR PEAK INTERVALS				
MAX. 7 - 9 am PEAK HOUR	469	⇒	12.2%	between 8-9 AM	1808	⇒	6 HR TOTAL	2 HR AM (7 - 9 AM)			
MAX. 7 - 11 am PEAK HOUR	469	⇒	12.2%	between 8-9 AM	1473	⇒	4 HR TOTAL	VEH / HR	VEH / 2HR	2 HR %	
MAX. 11 am - 1 pm PEAK HOUR	180	⇒	4.7%	between 12-1 PM				7-8 AM	248	717	18.6%
MAX. 11 am - 3 pm PEAK HOUR	312	⇒	8.1%	between 2-3 PM				8-9 AM	469		
MAX. 4 - 6 pm PEAK HOUR	415	⇒	10.7%	between 4-5 PM				2 HR NOON (11 - 1 PM)			
MAX. 3 - 6 pm PEAK HOUR	415	⇒	10.7%	between 4-5 PM				VEH / HR	VEH / 2HR	2 HR %	
								11-12 PM	155	336	8.7%
								12-1 PM	180		
								2 HR PM (4 - 6 PM)			
								VEH / HR	VEH / 2HR	2 HR %	
								4-5 PM	415	755	19.6%
								5-6 PM	341		

Carey Rd between Ridgebank Cres and Roy Rd

Northbound

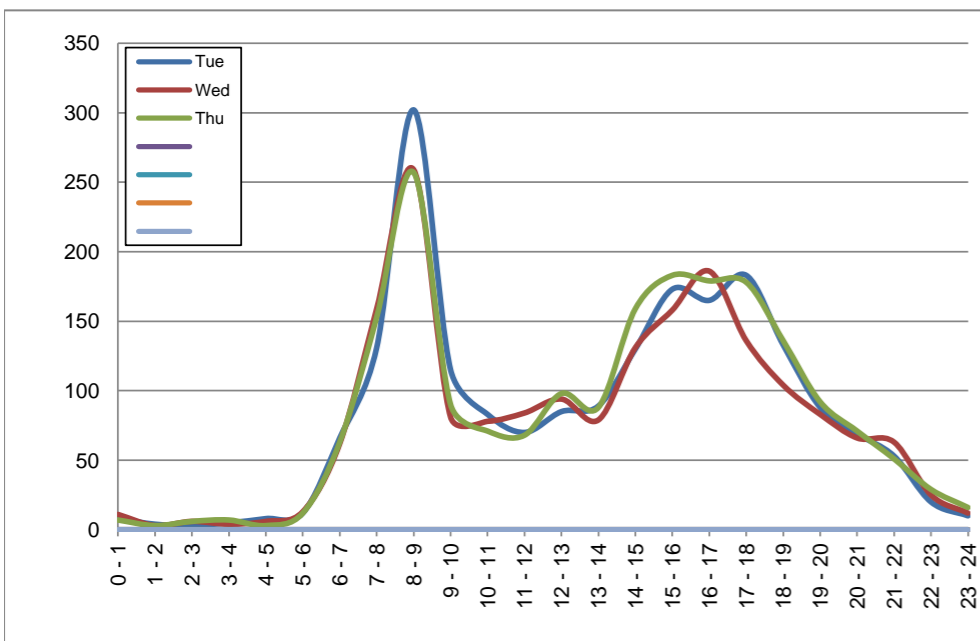
October 22, 2019 to October 24, 2019

Hourly Volumes

Time Period	Tue	Wed	Thu				
	Oct 22	Oct 23	Oct 24				
0 - 1	8	11	7				
1 - 2	4	3	3				
2 - 3	3	6	6				
3 - 4	5	4	7				
4 - 5	8	6	3				
5 - 6	12	13	12				
6 - 7	66	62	63				
7 - 8	131	159	153				
8 - 9	302	259	257				
9 - 10	115	81	90				
10 - 11	83	78	71				
11 - 12	70	84	68				
12 - 13	85	94	98				
13 - 14	89	79	88				
14 - 15	130	131	159				
15 - 16	173	158	183				
16 - 17	165	186	179				
17 - 18	183	136	178				
18 - 19	133	104	136				
19 - 20	88	83	92				
20 - 21	69	66	71				
21 - 22	53	63	51				
22 - 23	20	25	29				
23 - 24	10	12	16				
Day Total	2005	1903	2020				

15-Minute Volumes

Time Start	Tue	Wed	Thu				
	Oct 22	Oct 23	Oct 24				
0:00	2	4	3				
0:15	0	4	1				
0:30	3	3	3				
0:45	3	0	0				
1:00	1	0	1				
1:15	2	1	1				
1:30	1	2	1				
1:45	0	0	0				
2:00	1	0	0				
2:15	0	2	3				
2:30	2	1	1				
2:45	0	3	2				
3:00	0	0	0				
3:15	2	0	0				
3:30	2	2	1				
3:45	1	2	6				
4:00	1	3	0				
4:15	1	1	0				
4:30	2	2	1				
4:45	4	0	2				
5:00	2	0	3				
5:15	2	4	3				
5:30	3	4	4				
5:45	5	5	2				
6:00	12	7	7				
6:15	12	20	16				
6:30	22	20	16				
6:45	20	15	24				
7:00	23	31	25				
7:15	36	32	37				
7:30	37	44	46				
7:45	35	52	45				
8:00	65	71	70				
8:15	90	62	52				
8:30	86	69	76				
8:45	61	57	59				
9:00	45	27	30				
9:15	21	24	21				
9:30	24	13	22				
9:45	25	17	17				
10:00	28	22	24				
10:15	16	16	20				
10:30	19	26	19				
10:45	20	14	8				
11:00	15	22	21				
11:15	14	16	16				
11:30	20	20	18				
11:45	21	26	13				
12:00	17	20	32				
12:15	25	28	27				
12:30	19	23	26				
12:45	24	23	13				
13:00	18	19	20				
13:15	30	21	18				
13:30	23	17	16				
13:45	18	22	34				
14:00	20	28	38				
14:15	33	36	39				
14:30	28	30	44				
14:45	49	37	38				
15:00	49	40	47				
15:15	44	50	45				
15:30	33	33	46				
15:45	47	35	45				
16:00	48	44	42				
16:15	29	44	42				
16:30	38	47	40				
16:45	50	51	55				
17:00	46	43	52				
17:15	58	37	44				
17:30	33	27	46				
17:45	46	29	36				
18:00	42	26	40				
18:15	40	25	34				
18:30	19	26	31				
18:45	32	27	31				
19:00	22	23	23				
19:15	26	19	19				
19:30	21	22	33				
19:45	19	19	17				
20:00	17	11	25				
20:15	14	14	13				
20:30	27	21	18				
20:45	11	20	15				
21:00	13	21	9				
21:15	12	19	12				
21:30	13	11	15				
21:45	15	12	15				
22:00	4	9	6				
22:15	11	8	10				
22:30	1	3	9				
22:45	4	5	4				
23:00	2	5	5				
23:15	2	3	5				
23:30	3	1	3				
23:45	3	3	3				



Site notes:

Carey Rd between Ridgebank Cres and Roy Rd

Southbound

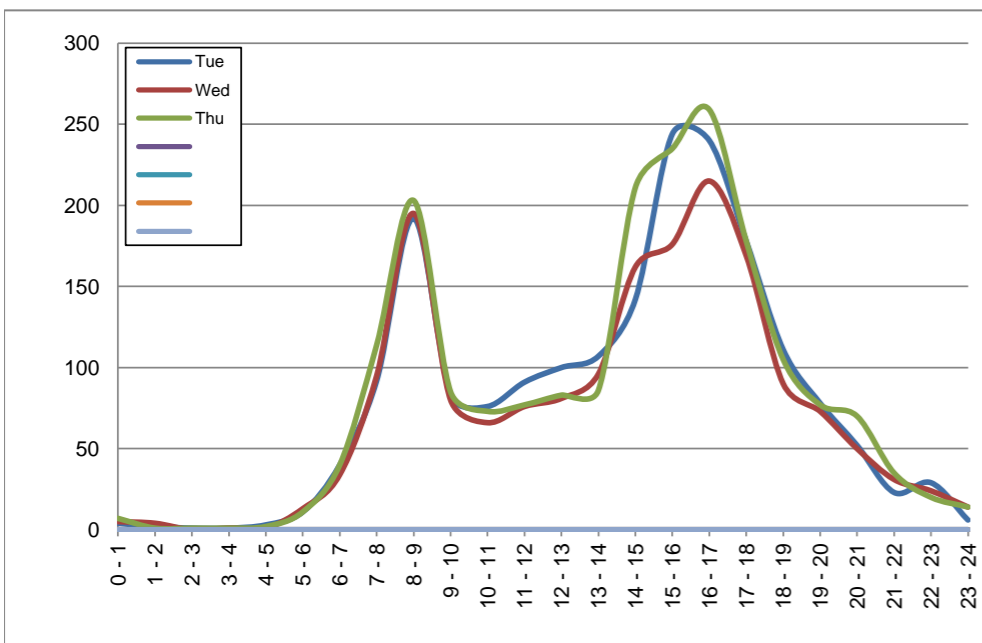
October 22, 2019 to October 24, 2019

Hourly Volumes

Time Period	Tue	Wed	Thu			
	Oct 22	Oct 23	Oct 24			
0 - 1	4	5	7			
1 - 2	2	4	1			
2 - 3	1	0	1			
3 - 4	1	1	1			
4 - 5	3	1	2			
5 - 6	11	13	11			
6 - 7	40	34	40			
7 - 8	92	95	114			
8 - 9	192	195	203			
9 - 10	83	80	85			
10 - 11	76	66	73			
11 - 12	91	76	77			
12 - 13	100	81	83			
13 - 14	107	96	86			
14 - 15	142	162	211			
15 - 16	244	176	235			
16 - 17	240	215	259			
17 - 18	178	169	178			
18 - 19	111	90	105			
19 - 20	78	73	77			
20 - 21	52	50	70			
21 - 22	23	31	35			
22 - 23	29	24	20			
23 - 24	6	14	14			
Day Total	1906	1751	1988			

15-Minute Volumes

Time Start	Tue	Wed	Thu				Time Start	Tue	Wed	Thu			
	Oct 22	Oct 23	Oct 24					Oct 22	Oct 23	Oct 24			
0:00	0	3	3				12:00	29	25	23			
0:15	1	0	3				12:15	25	18	18			
0:30	2	0	1				12:30	22	14	15			
0:45	1	2	0				12:45	24	24	27			
1:00	0	1	0				13:00	27	25	25			
1:15	2	1	0				13:15	27	21	19			
1:30	0	1	0				13:30	25	24	24			
1:45	0	1	1				13:45	28	26	18			
2:00	0	0	0				14:00	26	25	26			
2:15	0	0	1				14:15	23	34	39			
2:30	0	0	0				14:30	44	50	67			
2:45	1	0	0				14:45	49	53	79			
3:00	0	0	0				15:00	36	37	54			
3:15	0	0	1				15:15	58	43	62			
3:30	0	0	0				15:30	71	44	61			
3:45	1	1	0				15:45	79	52	58			
4:00	0	0	1				16:00	68	62	71			
4:15	1	0	0				16:15	56	47	63			
4:30	1	0	0				16:30	64	53	76			
4:45	1	1	1				16:45	52	53	49			
5:00	3	5	1				17:00	50	53	54			
5:15	2	1	3				17:15	48	42	55			
5:30	4	4	1				17:30	48	46	40			
5:45	2	3	6				17:45	32	28	29			
6:00	7	3	4				18:00	32	27	30			
6:15	9	5	7				18:15	36	20	28			
6:30	8	10	12				18:30	21	17	27			
6:45	16	16	17				18:45	22	26	20			
7:00	20	23	29				19:00	18	12	23			
7:15	20	18	24				19:15	18	24	20			
7:30	25	35	33				19:30	23	26	20			
7:45	27	19	28				19:45	19	11	14			
8:00	42	42	48				20:00	13	15	24			
8:15	48	45	52				20:15	9	7	16			
8:30	51	57	56				20:30	16	15	18			
8:45	51	51	47				20:45	14	13	12			
9:00	21	25	25				21:00	8	6	10			
9:15	17	18	21				21:15	6	9	8			
9:30	22	18	20				21:30	6	11	13			
9:45	23	19	19				21:45	3	5	4			
10:00	18	18	18				22:00	7	4	5			
10:15	20	11	19				22:15	12	8	7			
10:30	19	18	18				22:30	7	9	3			
10:45	19	19	18				22:45	3	3	5			
11:00	20	17	18				23:00	2	5	3			
11:15	14	21	12				23:15	1	4	5			
11:30	32	16	24				23:30	3	4	2			
11:45	25	22	23				23:45	0	1	4			



Site notes:

Vehicle Speed Summary

Saanich Engineering Department

Count Id: [C0011-07](#)

Filename: [Carey Rd between Ridgebank Cres and Roy Rd-Oct-2019.xlsm](#)

Location: Carey Rd between Ridgebank Cres and Roy Rd

Note:

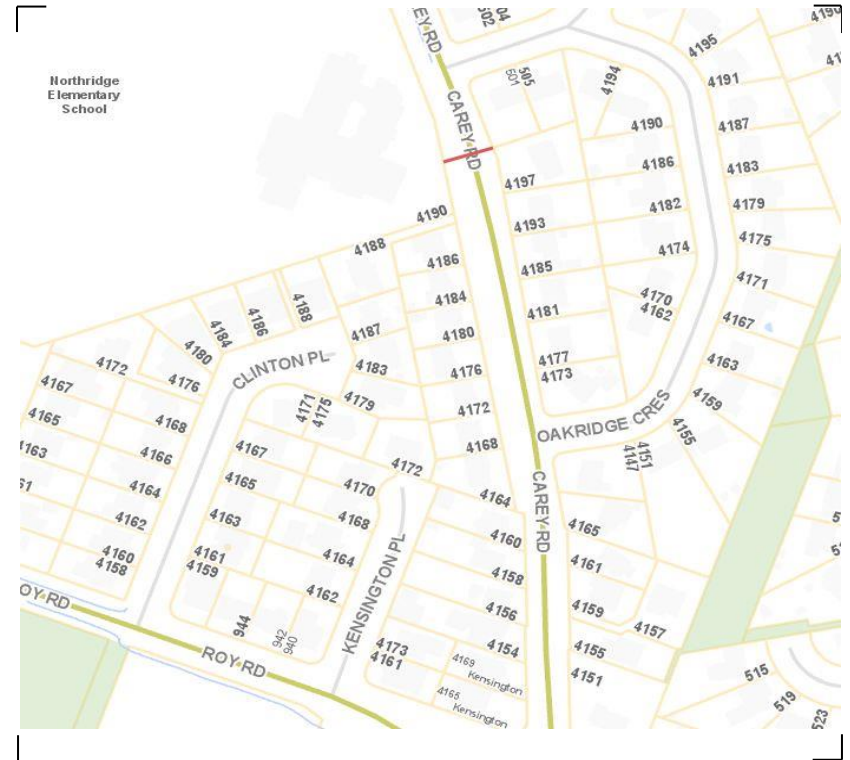
Direction: **North-South**

Dates: **October 21, 2019 To October 25, 2019**

Filtered data

AVG. SPEED	23 mph	37 km/h
50 % SPEED	22 mph	36 km/h
85 % SPEED	28 mph	46 km/h
95 % SPEED	32 mph	51 km/h

Location Map



Carey Rd between Ridgebank Cres and Roy Rd

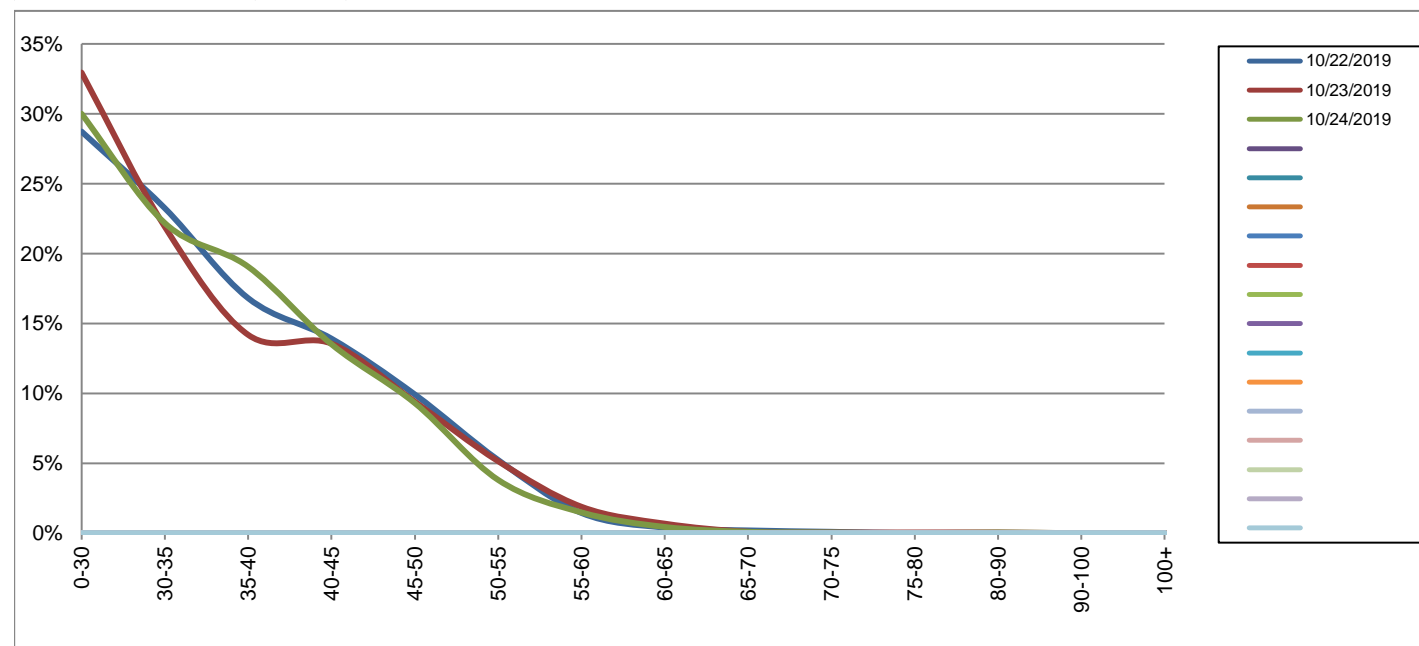
Northbound

October 22, 2019 to October 24, 2019

Daily Speed Bin Percentages															Daily Speed Bin Volumes														Total	Avg.
Bin #	1	2	3	4	5	6	7	8	9	10	11	12	13	14	1	2	3	4	5	6	7	8	9	10	11	12	13	14	Volume	Speed
Bin Speeds	0-30	30-35	35-40	40-45	45-50	50-55	55-60	60-65	65-70	70-75	75-80	80-90	90-100	100+	0-30	30-35	35-40	40-45	45-50	50-55	55-60	60-65	65-70	70-75	75-80	80-90	90-100	100+		
10/22/2019	28.7%	23.2%	16.8%	13.9%	9.9%	5.2%	1.4%	0.4%	0.2%	0.1%	0.0%	0.0%	0.0%	0.0%	576	466	337	279	199	105	29	8	4	2	0	0	0	0	2005	33
10/23/2019	32.9%	21.9%	14.2%	13.6%	9.4%	5.1%	1.9%	0.7%	0.1%	0.1%	0.1%	0.1%	0.0%	0.0%	627	417	270	258	179	98	36	13	2	1	1	1	0	0	1903	32
10/24/2019	30.0%	22.2%	19.1%	13.5%	9.3%	3.8%	1.5%	0.4%	0.1%	0.0%	0.0%	0.0%	0.0%	0.0%	606	448	385	273	188	77	30	9	2	1	0	1	0	0	2020	32
Total	30.5%	22.5%	16.7%	13.7%	9.5%	4.7%	1.6%	0.5%	0.1%	0.1%	0.0%	0.0%	0.0%	0.0%	1809	1331	992	810	566	280	95	30	8	4	1	2	0	0	5928	32

Speed Data Summary

Bin #	1	2	3	4	5	6	7	8	9	10	11	12	13	14	Total
Bin Speeds	0-30	30-35	35-40	40-45	45-50	50-55	55-60	60-65	65-70	70-75	75-80	80-90	90-100	100+	
Survey Total	1809	1331	992	810	566	280	95	30	8	4	1	2	0	0	5928
% Total	30.5%	22.5%	16.7%	13.7%	9.5%	4.7%	1.6%	0.5%	0.1%	0.1%	0.0%	0.0%	0.0%	0.0%	100%
Accumulated %	30.5%	53.0%	69.7%	83.4%	92.9%	97.6%	99.2%	99.7%	99.9%	99.9%	100.0%	100.0%	100.0%	100%	
Inverse Accum. %	69.5%	47.0%	30.3%	16.6%	7.1%	2.4%	0.8%	0.3%	0.1%	0.1%	0.0%	0.0%	0.0%	0.0%	
Average Speed	32 KM/H														



Site notes:

Carey Rd between Ridgebank Cres and Roy Rd

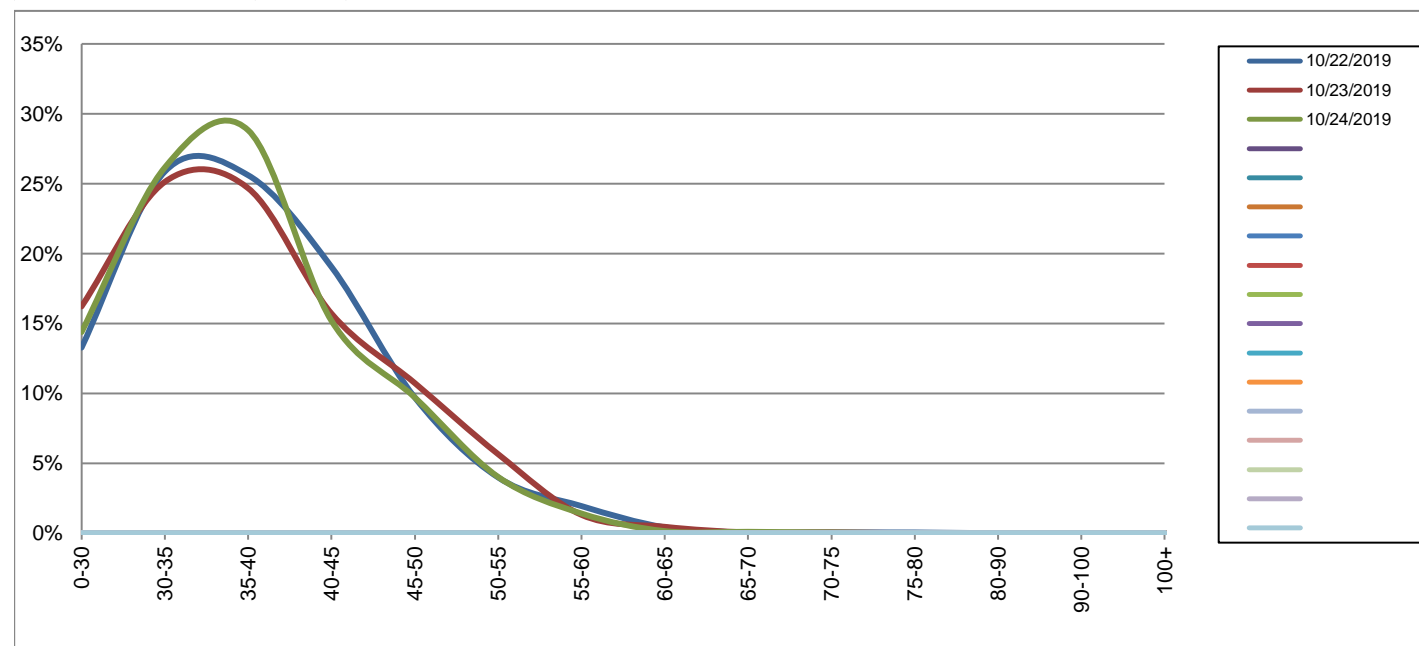
Southbound

October 22, 2019 to October 24, 2019

Daily Speed Bin Percentages															Daily Speed Bin Volumes														Total	Avg.
Bin #	1	2	3	4	5	6	7	8	9	10	11	12	13	14	1	2	3	4	5	6	7	8	9	10	11	12	13	14	Volume	Speed
Bin Speeds	0-30	30-35	35-40	40-45	45-50	50-55	55-60	60-65	65-70	70-75	75-80	80-90	90-100	100+	0-30	30-35	35-40	40-45	45-50	50-55	55-60	60-65	65-70	70-75	75-80	80-90	90-100	100+		
10/22/2019	13.3%	25.9%	25.6%	19.0%	9.7%	4.0%	1.9%	0.4%	0.1%	0.1%	0.1%	0.0%	0.0%	0.0%	253	493	488	363	185	76	37	8	1	1	1	0	0	0	1906	36
10/23/2019	16.2%	25.1%	24.7%	15.7%	10.7%	5.7%	1.3%	0.5%	0.1%	0.1%	0.0%	0.0%	0.0%	0.0%	284	440	432	275	188	99	23	8	1	1	0	0	0	0	1751	36
10/24/2019	14.4%	26.2%	28.8%	15.2%	9.7%	4.0%	1.4%	0.2%	0.1%	0.1%	0.0%	0.0%	0.0%	0.0%	286	520	573	302	193	80	28	3	2	1	0	0	0	0	1988	36
Total	14.6%	25.7%	26.4%	16.7%	10.0%	4.5%	1.6%	0.3%	0.1%	0.1%	0.0%	0.0%	0.0%	0.0%	823	1453	1493	940	566	255	88	19	4	3	1	0	0	5645	36	

Speed Data Summary

Bin #	1	2	3	4	5	6	7	8	9	10	11	12	13	14	Total
Bin Speeds	0-30	30-35	35-40	40-45	45-50	50-55	55-60	60-65	65-70	70-75	75-80	80-90	90-100	100+	
Survey Total	823	1453	1493	940	566	255	88	19	4	3	1	0	0	0	5645
% Total	14.6%	25.7%	26.4%	16.7%	10.0%	4.5%	1.6%	0.3%	0.1%	0.1%	0.0%	0.0%	0.0%	0.0%	100%
Accumulated %	14.6%	40.3%	66.8%	83.4%	93.4%	98.0%	99.5%	99.9%	99.9%	100.0%	100.0%	100.0%	100.0%	100%	
Inverse Accum. %	85.4%	59.7%	33.2%	16.6%	6.6%	2.0%	0.5%	0.1%	0.1%	0.0%	0.0%	0.0%	0.0%	0.0%	
Average Speed	36 KM/H														



Site notes:

Carey Rd between Ridgebank Cres and Roy Rd

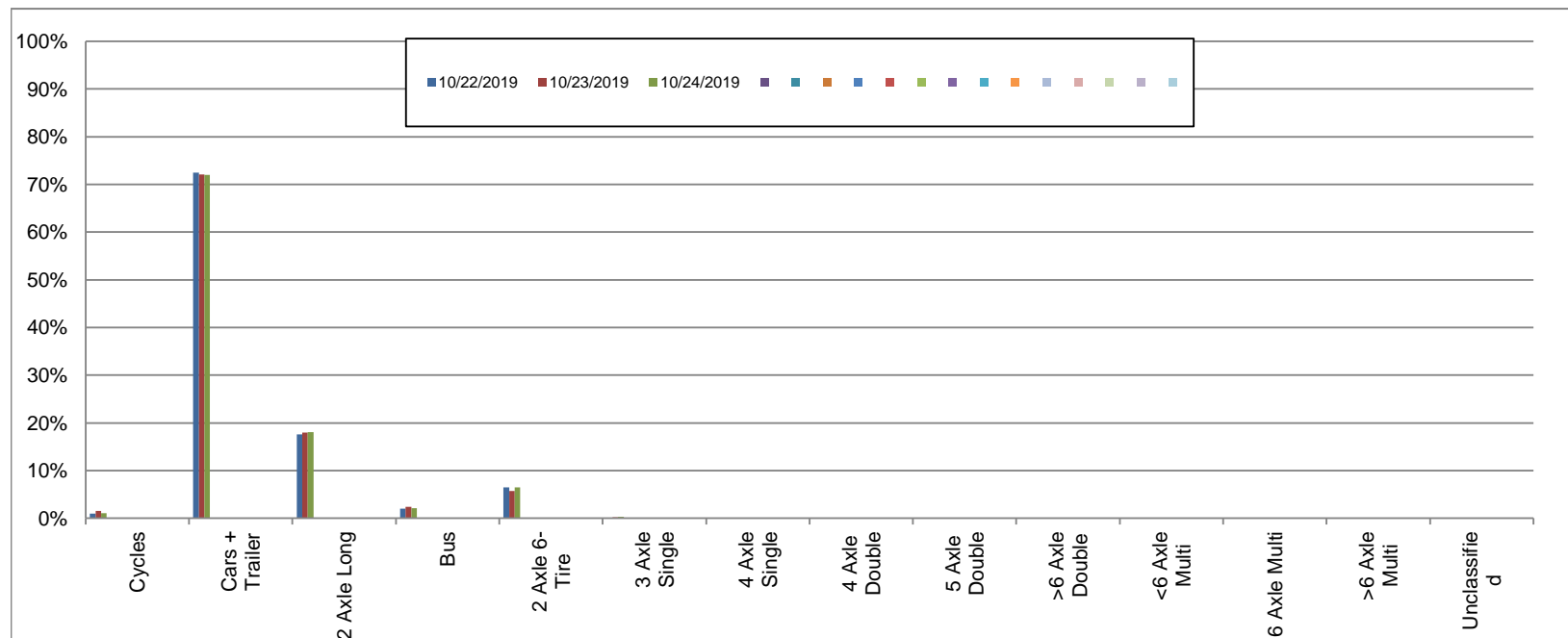
Northbound

October 22, 2019 to October 24, 2019

Daily Class Bin Percentages															Daily Class Bin Volumes														
Bin #	1	2	3	4	5	6	7	8	9	10	11	12	13	14	1	2	3	4	5	6	7	8	9	10	11	12	13	14	Total Volume
Bin Class	Cycles	Cars + Trailer	2 Axle Long	Bus	2 Axle 6-Tire	3 Axle Single	4 Axle Single	4 Axle Double	5 Axle Double	>6 Axle Double	<6 Axle Multi	6 Axle Multi	>6 Axle Multi	Unclassified	Cycles	Cars + Trailer	2 Axle Long	Bus	2 Axle 6-Tire	3 Axle Single	4 Axle Single	4 Axle Double	5 Axle Double	>6 Axle Double	<6 Axle Multi	6 Axle Multi	>6 Axle Multi	Unclassified	
10/22/2019	1.0%	72.5%	17.6%	2.0%	6.4%	0.1%	0.0%	0.1%	0.0%	0.0%	0.0%	0.0%	0.0%	0.1%	20	1454	353	41	129	3	0	2	1	0	0	0	0	2	2005
10/23/2019	1.5%	72.0%	18.0%	2.4%	5.7%	0.2%	0.0%	0.1%	0.0%	0.0%	0.0%	0.0%	0.0%	0.1%	29	1371	342	45	109	4	0	1	0	0	0	0	0	2	1903
10/24/2019	1.0%	72.0%	18.0%	2.1%	6.4%	0.3%	0.0%	0.1%	0.0%	0.0%	0.0%	0.0%	0.0%	0.0%	21	1454	364	43	130	6	0	2	0	0	0	0	0	0	2020
Total	1.2%	72.2%	17.9%	2.2%	6.2%	0.2%	0.0%	0.1%	0.0%	0.0%	0.0%	0.0%	0.0%	0.1%	70	4279	1059	129	368	13	0	5	1	0	0	0	4	5928	

Class Data Summary

Bin #	1	2	3	4	5	6	7	8	9	10	11	12	13	14	Total Volume
Bin Class	Cycles	Cars + Trailer	2 Axle Long	Bus	2 Axle 6-Tire	3 Axle Single	4 Axle Single	4 Axle Double	5 Axle Double	>6 Axle Double	<6 Axle Multi	6 Axle Multi	>6 Axle Multi	Unclassified	Total Volume
Survey Total	70	4279	1059	129	368	13	0	5	1	0	0	0	0	4	5928
% Total	1.2%	72.2%	17.9%	2.2%	6.2%	0.2%	0.0%	0.1%	0.0%	0.0%	0.0%	0.0%	0.0%	0.1%	100%
Accumulated %	1.2%	73.4%	91.2%	93.4%	99.6%	99.8%	99.8%	99.9%	99.9%	99.9%	99.9%	99.9%	99.9%	100.0%	
Inv. Accum. %	98.8%	26.6%	8.8%	6.6%	0.4%	0.2%	0.2%	0.1%	0.1%	0.1%	0.1%	0.1%	0.0%		



Classification Descriptions

Bin #	Bin Description
1	Motorcycles
2	Passenger cars, including those with recreational trailers
3	2-axle pick-ups, vans, and RVs, including those with recreational trailers
4	Buses
5	2-axle, 6-tire single units
6	3-axle single units
7	4-axle single units
8	3-axle or 4-axle double unit
9	5-axle double unit
10	6-, 7-, or 8-axle double unit
11	5-axle multiple unit
12	6-axle multiple unit
13	7-or-more-axle multiple unit
14	Vehicles that could not be classified

Site notes:

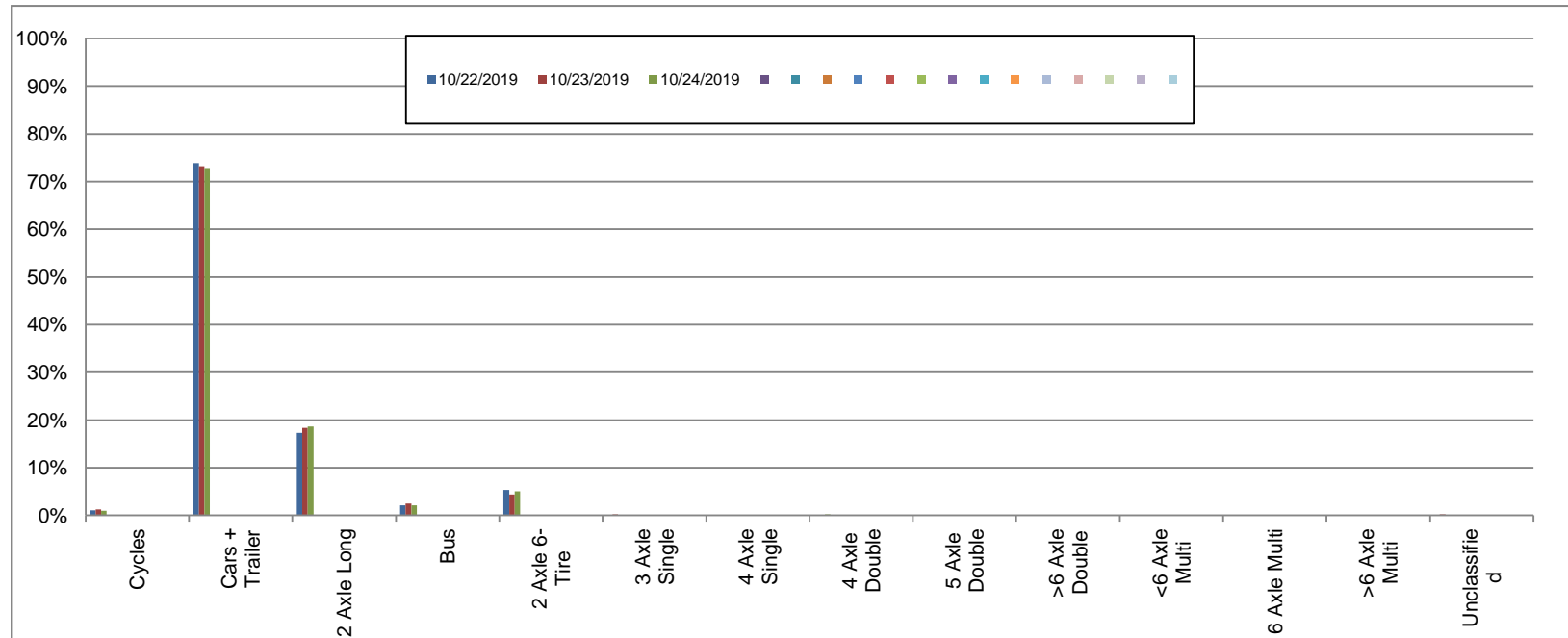
Carey Rd between Ridgebank Cres and Roy Rd

Southbound
October 22, 2019 to October 24, 2019

Daily Class Bin Percentages															Daily Class Bin Volumes															
Bin #	1	2	3	4	5	6	7	8	9	10	11	12	13	14	1	2	3	4	5	6	7	8	9	10	11	12	13	14	Total Volume	
Bin Class	Cycles	Cars + Trailer	2 Axle Long	Bus	2 Axle 6-Tire	3 Axle Single	4 Axle Single	4 Axle Double	5 Axle Double	>6 Axle Double	<6 Axle Multi	6 Axle Multi	>6 Axle Multi	Unclassified	Cycles	Cars + Trailer	2 Axle Long	Bus	2 Axle 6-Tire	3 Axle Single	4 Axle Single	4 Axle Double	5 Axle Double	>6 Axle Double	<6 Axle Multi	6 Axle Multi	>6 Axle Multi	Unclassified		
10/22/2019	1.0%	73.9%	17.3%	2.2%	5.4%	0.2%	0.0%	0.1%	0.0%	0.0%	0.0%	0.0%	0.0%	0.1%	20	1409	329	41	102	3	0	1	0	0	0	0	0	0	1	1906
10/23/2019	1.3%	73.0%	18.3%	2.5%	4.4%	0.2%	0.0%	0.1%	0.0%	0.0%	0.0%	0.0%	0.0%	0.2%	22	1279	321	43	77	4	0	2	0	0	0	0	0	0	3	1751
10/24/2019	1.0%	72.7%	18.6%	2.1%	5.1%	0.2%	0.0%	0.3%	0.0%	0.0%	0.0%	0.0%	0.0%	0.2%	20	1445	370	41	101	3	0	5	0	0	0	0	0	0	3	1988
Total	1.1%	73.2%	18.1%	2.2%	5.0%	0.2%	0.0%	0.1%	0.0%	0.0%	0.0%	0.0%	0.0%	0.1%	62	4133	1020	125	280	10	0	8	0	0	0	0	0	7	5645	

Class Data Summary

Bin #	1	2	3	4	5	6	7	8	9	10	11	12	13	14	Total Volume
Bin Class	Cycles	Cars + Trailer	2 Axle Long	Bus	2 Axle 6-Tire	3 Axle Single	4 Axle Single	4 Axle Double	5 Axle Double	>6 Axle Double	<6 Axle Multi	6 Axle Multi	>6 Axle Multi	Unclassified	Total Volume
Survey Total	62	4133	1020	125	280	10	0	8	0	0	0	0	0	7	5645
% Total	1.1%	73.2%	18.1%	2.2%	5.0%	0.2%	0.0%	0.1%	0.0%	0.0%	0.0%	0.0%	0.0%	0.1%	100%
Accumulated %	1.1%	74.3%	92.4%	94.6%	99.6%	99.7%	99.7%	99.9%	99.9%	99.9%	99.9%	99.9%	99.9%	100.0%	
Inv. Accum. %	98.9%	25.7%	7.6%	5.4%	0.4%	0.3%	0.3%	0.1%	0.1%	0.1%	0.1%	0.1%	0.0%		



Classification Descriptions

Bin #	Bin Description
1	Motorcycles
2	Passenger cars, including those with recreational trailers
3	2-axle pick-ups, vans, and RVs, including those with recreational trailers
4	Buses
5	2-axle, 6-tire single units
6	3-axle single units
7	4-axle single units
8	3-axle or 4-axle double unit
9	5-axle double unit
10	6-, 7-, or 8-axle double unit
11	5-axle multiple unit
12	6-axle multiple unit
13	7-or-more-axle multiple unit
14	Vehicles that could not be classified

Site notes: